

## MANIFOLDS For Pure Gases

## LRC

### MANIFOLD FOR DISTRIBUTION OF HIGH PURITY, NON CORROSIVE GASES

These manifold are deigned to connect one or more bottles of gas to a singleline.

Each inlet connection is

equipped with:

- Manual shut-off valve check-valve
- Check-valve, to prevent any return of gas
- Bleeding valve, to clean the circuit before operating

Each manifold provides two outlet connections, one oneach side, for the full flexibility of the installation

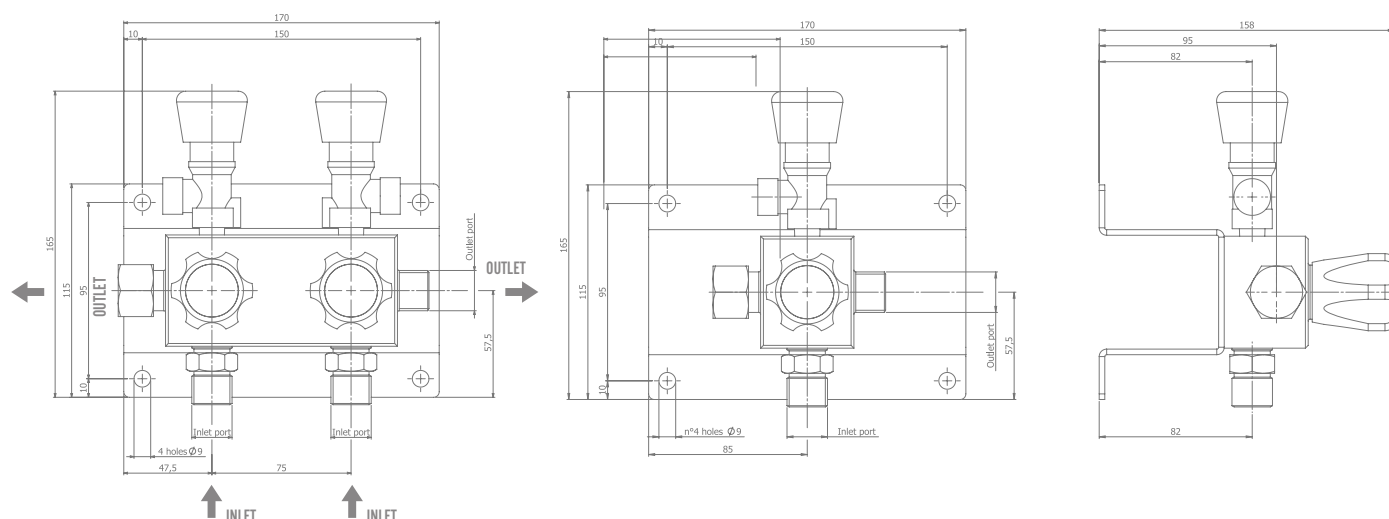


### MATERIALS

<b>Body</b>	Made of chrome-plated brass Cleaned and degreased for oxygen service6
<b>Panel</b>	Anodised aluminium for wall mounting
<b>Knobs</b>	Plastic

### TECHNICAL DATA

	Inert gases and oxygen	Flammable gases
<b>Working pressure</b>	Max. 300 bar	
<b>Inlet/outlet connections</b>	Threaded W21.7 x 1/14" male, right-hand	Threaded W20 x 1/14" male, left-hand
<b>Supplementary outlet connections</b>	Plugged by female cup	
<b>Venting connections on bleeding valves</b>	Threaded 1/4" NPT-F	



### SPECIFICATIONS:

H<sub>2</sub>-flammable gases

O<sub>2</sub>-inert gases

Inlet/Outlet port

W20 x 1/14"

W21,7 x 1/14"

Weight

2,1 kg for single bottle 4,2 kg for two bottles

Temperature range

-20°C to + 110°C

NR. OF BOTTLES	GAS	CODE
1 bottle	Inert gas and oxygen	LRC300011
2 bottle	Inert gas and oxygen	LRC300012
1 bottle	Flammable gas	LRC300071
2 bottle	Flammable gas	LRC300072